

Comparing stove performance

C Pemberton-Pigott

9-May-09

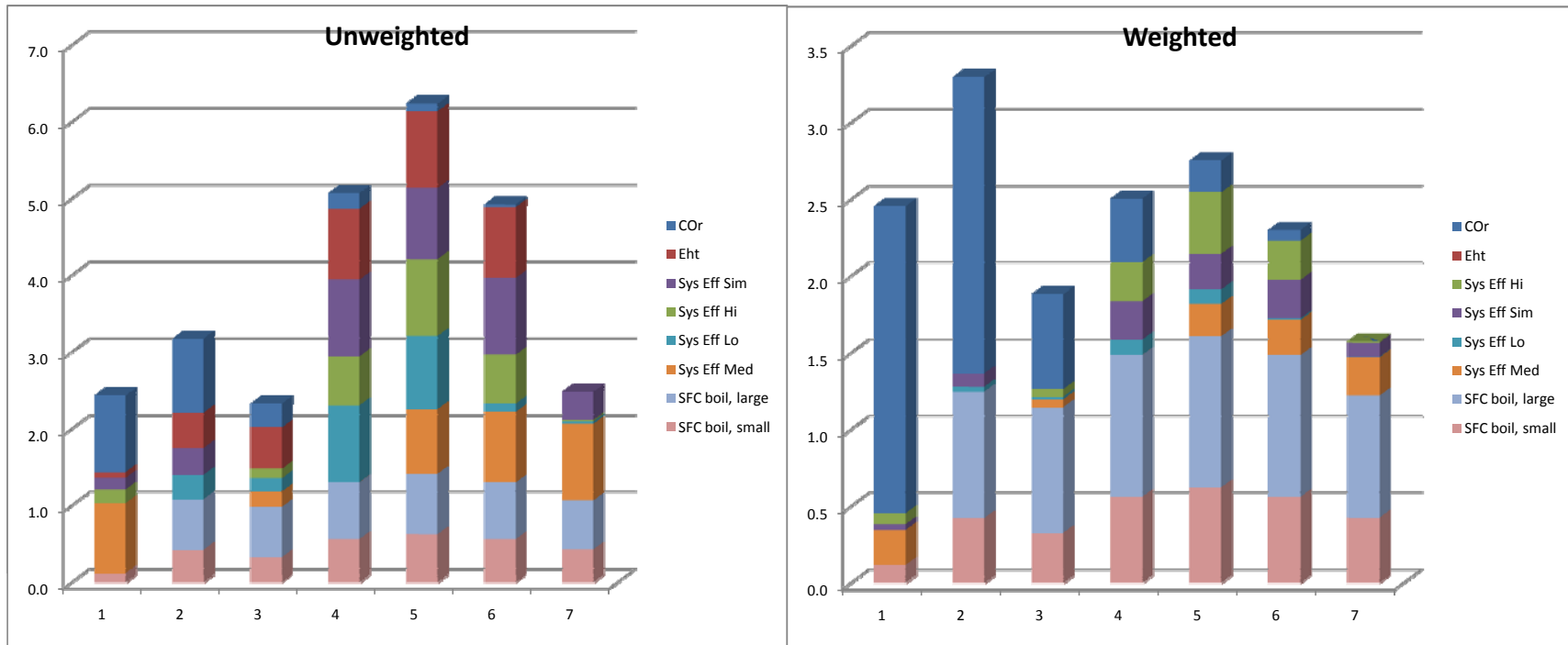
Results	Name	Metric	Stove 1	Stove 2	Stove 3	Stove 4	Stove 5	Stove 6	Stove 7
	COr	CO/CO2 ratio	1	1.1	3	3.3	3.6	3.8	3.9
	Eht	Eff, heat transfer	30%	35%	36%	41%	42%	41%	29%
	Sys Eff Hi	System Eff, hi power	34.0%	32.4%	33.5%	38.1%	41.4%	38.1%	32.6%
	Sys Eff Sim	System Eff, simmering	49.0%	51.8%	46.9%	61.0%	60.0%	61.0%	52.1%
	Sys Eff Lo	System Eff, lo power	29.1%	31.0%	30.1%	35.1%	34.8%	29.7%	29.3%
	Sys Eff Med	System Eff, med power	33.5%	28.5%	29.6%	28.5%	33.1%	33.6%	34.0%
	SFC boil, large	Sp Fuel cons, large pot	2.10	1.99	2.00	1.76	1.62	1.76	2.06
	SFC boil, small	Sp Fuel cons, small pot	2.85	2.67	2.95	2.27	2.09	2.27	2.66

Relative performance, unweighted

COr	CO/CO2 ratio	100%	97%	31%	21%	10%	3%	0%
Eht	Eff, heat transfer	8%	46%	54%	92%	100%	92%	0%
Sys Eff Hi	System Eff, hi power	18%	0%	12%	64%	100%	64%	2%
Sys Eff Sim	System Eff, simmering	15%	35%	0%	100%	93%	100%	37%
Sys Eff Lo	System Eff, lo power	0%	32%	17%	100%	95%	11%	3%
Sys Eff Med	System Eff, med power	91%	0%	20%	0%	84%	92%	100%
SFC boil, large	Sp Fuel cons, large pot	0%	66%	66%	74%	79%	74%	64%
SFC boil, small	Sp Fuel cons, small pot	12%	42%	33%	56%	62%	56%	43%
TOTAL		2.44	3.17	2.33	5.07	6.24	4.92	2.48

Weighting

	Metric	Weighted values							
2	COr	CO/CO2 ratio	200%	193%	62%	41%	21%	7%	0%
-	Eht	Eff, heat transfer	0%	0%	0%	0%	0%	0%	0%
0.40	Sys Eff Hi	System Eff, hi power	7%	0%	5%	25%	40%	25%	1%
0.25	Sys Eff Sim	System Eff, simmering	4%	9%	0%	25%	23%	25%	9%
0.10	Sys Eff Lo	System Eff, lo power	0%	3%	2%	10%	10%	1%	0%
0.25	Sys Eff Med	System Eff, med power	23%	0%	5%	0%	21%	23%	25%
1.25	SFC boil, large	Sp Fuel cons, large pot	0%	82%	82%	92%	98%	92%	79%
1.00	SFC boil, small	Sp Fuel cons, small pot	12%	42%	33%	56%	62%	56%	43%
TOTAL			2.46	3.30	1.88	2.51	2.75	2.30	1.58



In this weighting exercise, the stoves are rated against each other with the best in the category receiving 100% and the worst 0%. The others are given a rating depending on how they performed, near the top of bottom between the best and worst. The result is shown in the UNWEIGHTED chart. The weighting of each metric is then calculated, the result displayed on the WEIGHTED chart. To change the Metrics and Names, unprotect the worksheet.